

# Air Monitoring Summary Tables

The table below summarizes monitoring data collected using a portable wireless remote monitoring system. All times in Eastern Standard Time (EST).

**From: 06/22/24 12:00 am**

**To: 06/22/24 11:59 pm**

## Offsite Monitors

Instrument	Analyte	ATSDR MRL 14-day Avg Reached?	Concentration Range Detected <sup>a</sup>	24-hr Average <sup>a</sup>	7-day Average	ATSDR 14-day MRL
<b>Catawba Headstart</b>						
Acrulog PPB	H <sub>2</sub> S	No	0 – 0 ppb	0.00 ppb	0.00 ppb	70 ppb
<b>Treetops</b>						
Acrulog PPB	H <sub>2</sub> S	No	0 – 0 ppb	0.00 ppb	0.00 ppb	70 ppb
<b>Liberty Hill</b>						
Acrulog PPB	H <sub>2</sub> S	No	0 – 4 ppb	0.63 ppb	0.38 ppb	70 ppb
<b>Riverchase Estates</b>						
Acrulog PPB	H <sub>2</sub> S	No	0 – 6 ppb	0.58 ppb	0.44 ppb	70 ppb
<b>Millstone Creek</b>						
Acrulog PPB	H <sub>2</sub> S	No	0 – 4 ppb	0.27 ppb	0.08 ppb	70 ppb

## Onsite Fenceline Monitors

Instrument	Analyte	30-min AEGL Reached?	Concentration Range Detected <sup>a</sup>	24-hr Average <sup>a</sup>	7-day Average	30-min AEGL
<b>Station 1</b>						
TAPI Analyzer	H <sub>2</sub> S	No	0 – 7 ppb	0.90 ppb	1.91 ppb	600 ppb
<b>Station 2</b>						
TAPI Analyzer	H <sub>2</sub> S	No	0 – 2 ppb	0.30 ppb	0.26 ppb	600 ppb
<b>Station 3</b>						
TAPI Analyzer	H <sub>2</sub> S	No	0 – 5 ppb	0.74 ppb <sup>b</sup>	0.33 ppb	600 ppb

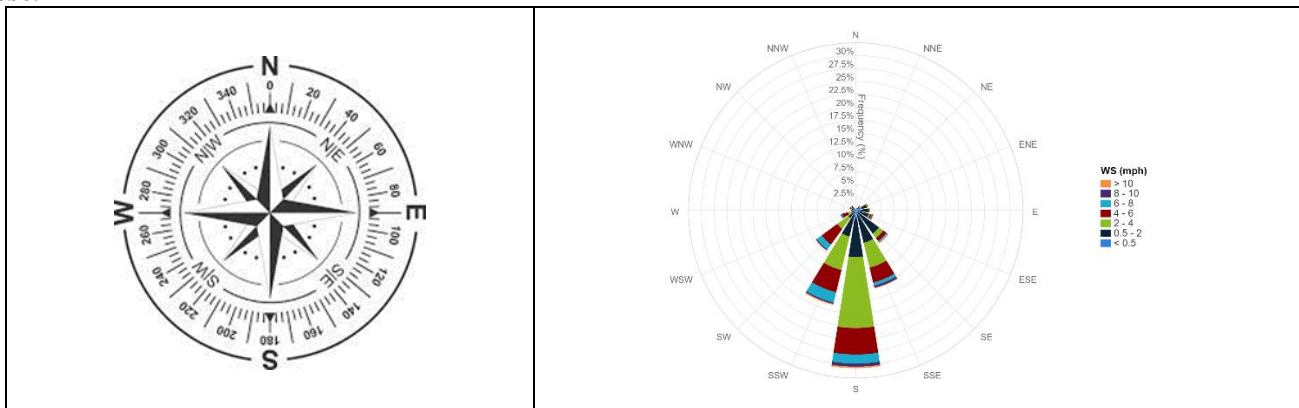
<sup>a</sup> Based on 30-minute averages.

<sup>b</sup> The 24-hour H<sub>2</sub>S average at Station 3 from the start of the sampling period to the end of the sampling period is represented by the backup unit data.

### Notes:

- ATSDR MRL Agency for Toxic Substances and Disease Registry Minimal Risk Level (MRL)
- AEGL EPA Acute Exposure Guidelines Levels
- H<sub>2</sub>S Hydrogen Sulfide
- TAPI Teledyne API H<sub>2</sub>S Analyzer
- hr Hour
- min Minute
- ppb Parts per billion
- MRL Limit Limit defined as a 14-day average value.

**Station 1 Wind Rose – Shows the direction the wind is coming from, the monitoring station being at the center of the rose.**





**Legend**

-  Offsite Fixed Monitoring Locations
-  Onsite Fixed Monitoring Locations
-  New-Indy Catawba

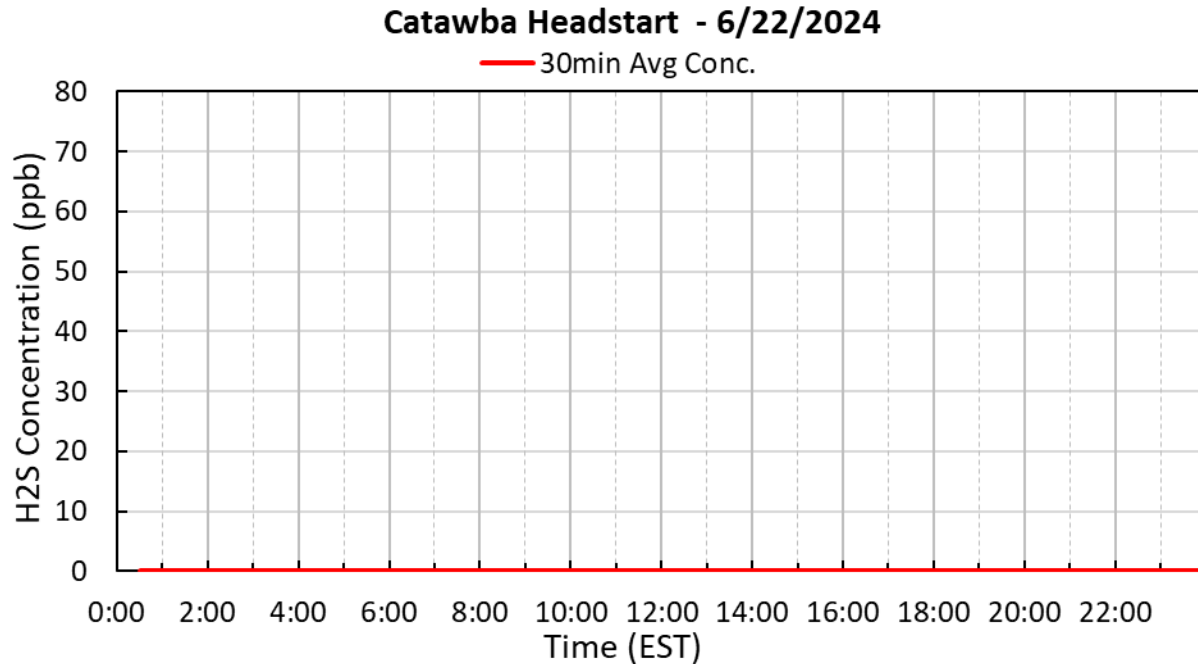
## Period H<sub>2</sub>S Monitoring Hydrogen Sulfide Offsite Monitors

Below are graphs for offsite locations where hydrogen sulfide (H<sub>2</sub>S) was detected during the current reporting period.

The five stand-alone H<sub>2</sub>S monitoring stations correlate with five previous EPA's Viper monitoring system which includes areas to the north-northeast and south-southwest of the New-Indy Catawba Mill.

Winds were predominantly coming from the southwest, south-southwest, south, and south-southeast direction throughout the day at 1 to 24 mph.

See wind rose diagram with aerial map figure for full wind data during this reporting period.



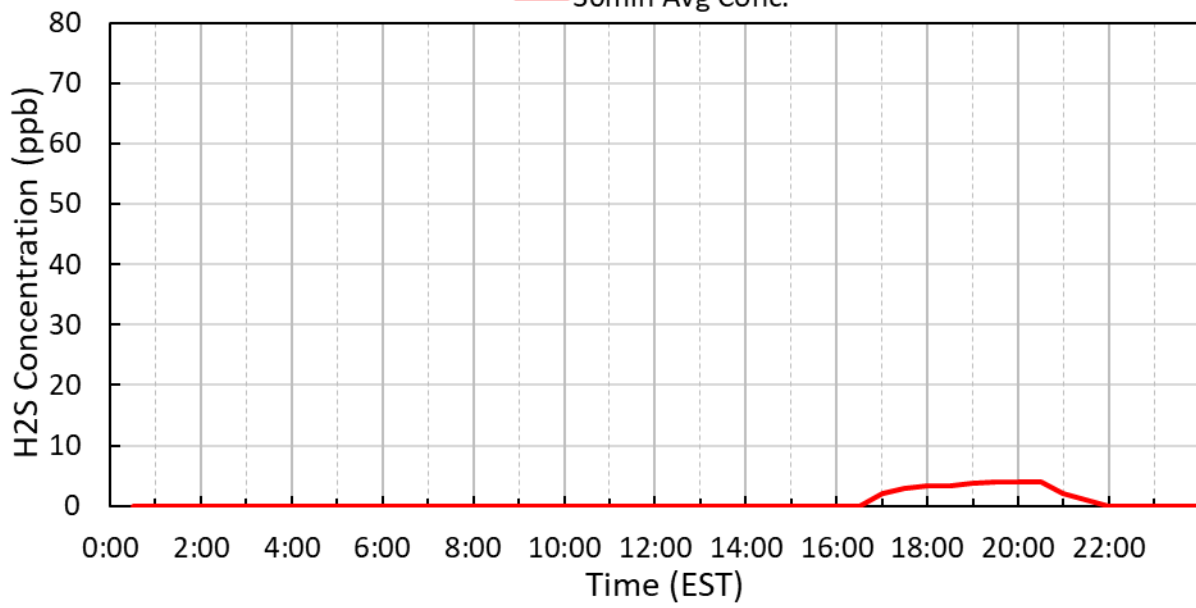
### Treetops - 6/22/2024

— 30min Avg Conc.

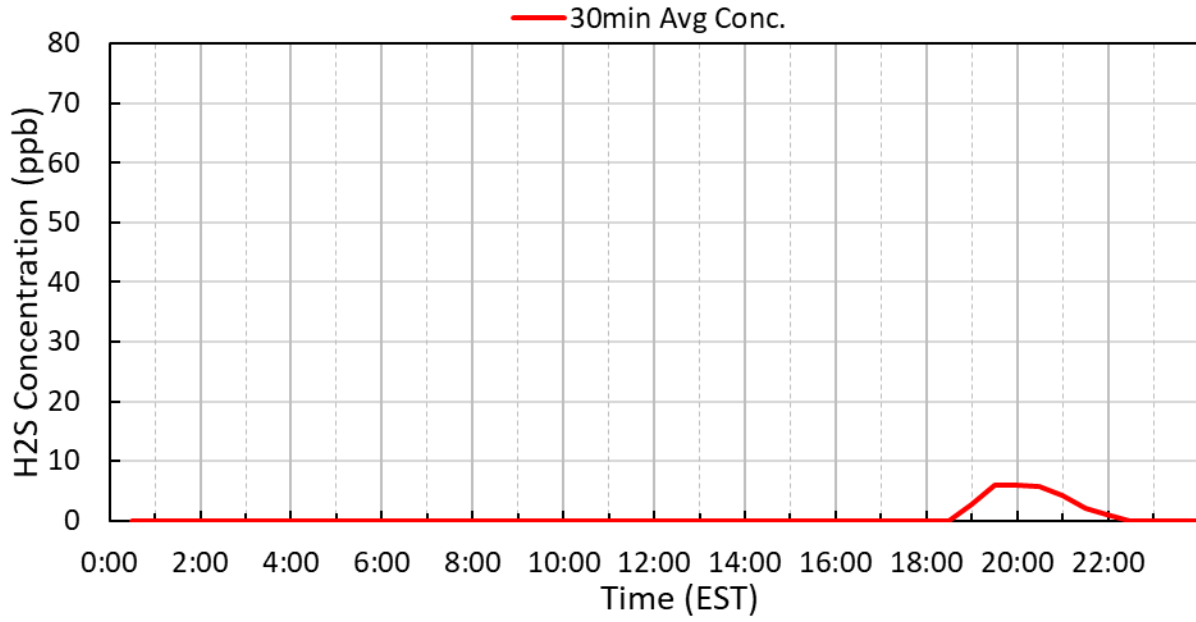


### Liberty Hill - 6/22/2024

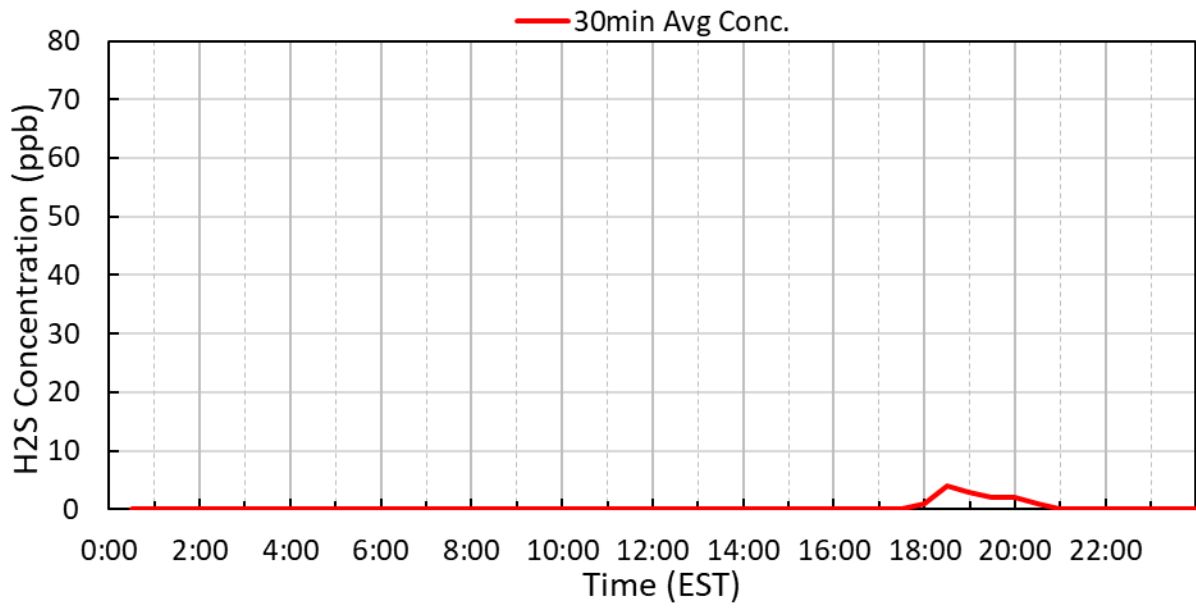
— 30min Avg Conc.



### Riverchase - 6/22/2024



### Millstone Creek - 6/22/2024



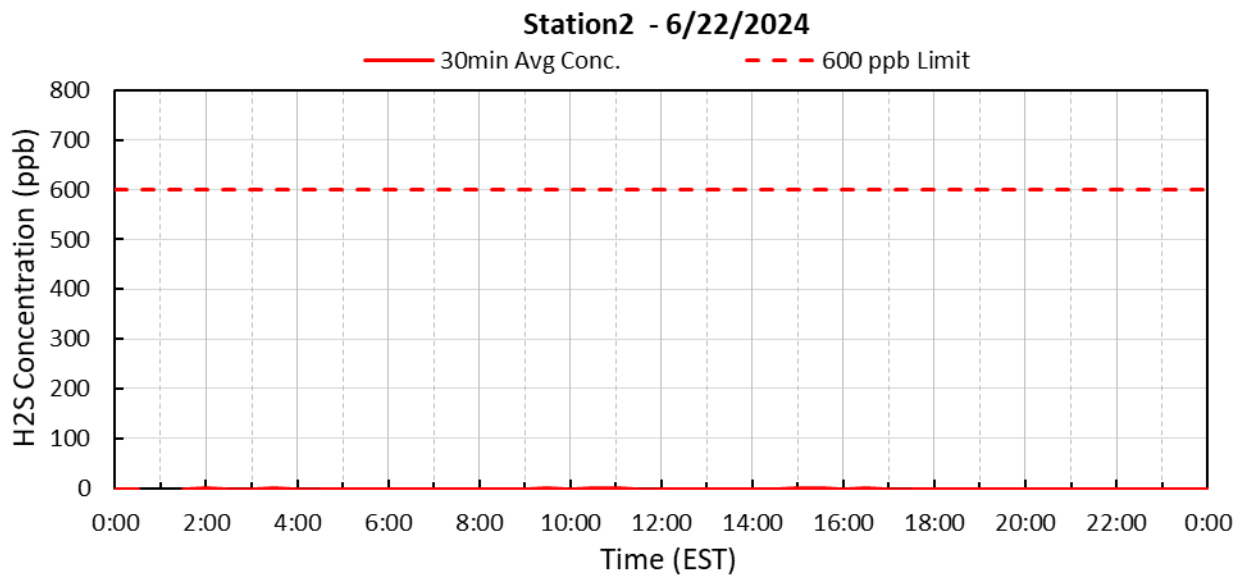
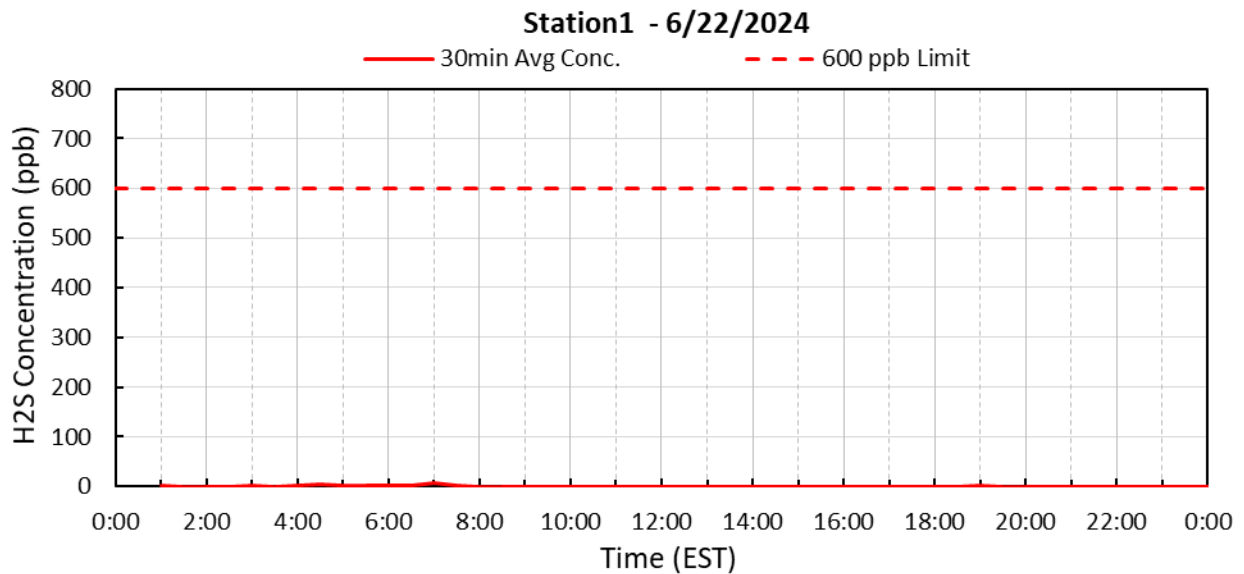
## Period H<sub>2</sub>S Monitoring Hydrogen Sulfide Onsite Monitors

Below are graphs for onsite locations during the current reporting period.

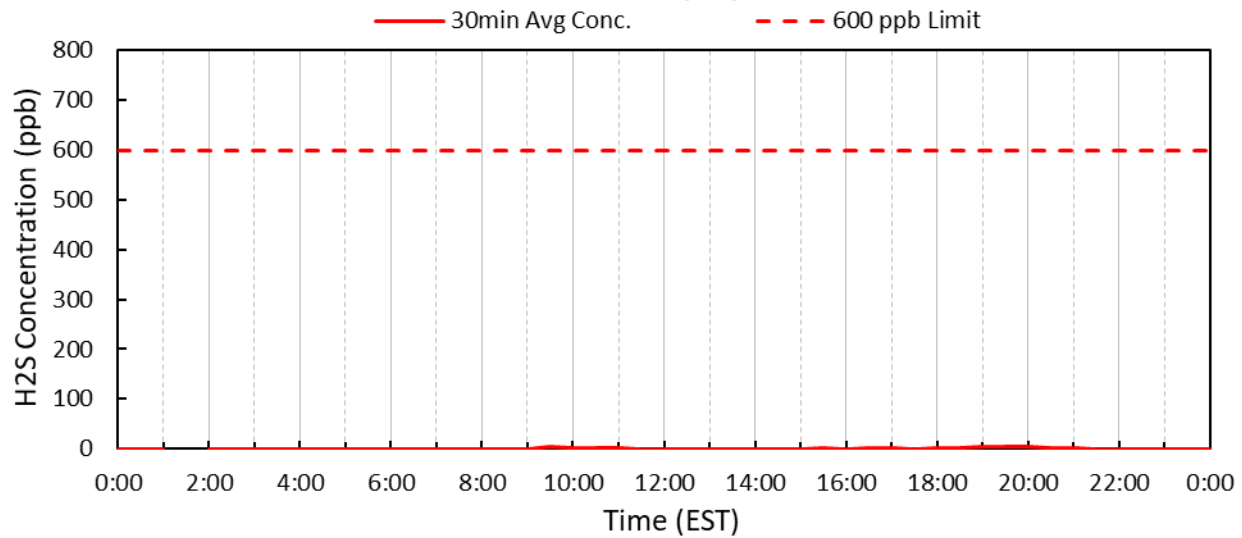
Depending on wind direction, the H<sub>2</sub>S measured at the onsite fence line locations may not exit the mill property at reported concentrations. Wind directions from offsite locations, blowing onto mill property, will disperse ambient concentrations to lower levels prior to exiting the plant site.

Winds were predominantly coming from the southwest, south-southwest, south, and south-southeast direction throughout the day at 1 to 24 mph.

See wind rose diagram with aerial map figure for full wind data during this reporting period.



### Station3 - 6/22/2024



Submitted Fenceline H<sub>2</sub>S and Met 30-minute Data

30-Minute Avgs	Station 1			Station 2			Station 3		
	H2S	Met		H2S	Met		H2S	Met	
	30min Avg H2S Conc.	30min Avg WS	30min Avg WD	30min Avg H2S Conc.	30min Avg WS	30min Avg WD	30min Avg H2S Conc.	30min Avg WS	30min Avg WD
Date / Time	ppb	mph	degrees	ppb	mph	degrees	ppb	mph	degrees
6/22/2024 0:30	AX	0.6	150	0.2	0.3	30	0.2	0.2	342
6/22/2024 1:00	1.1	0.7	187	AX	0.2	38	0.2	0.2	13
6/22/2024 1:30	0.6	1.3	196	0.2	0.4	345	AX	0.2	270
6/22/2024 2:00	0.2	0.7	206	0.4	0.3	16	0.4	0.3	302
6/22/2024 2:30	0.8	0.8	208	0.2	0.6	40	0.2	0.9	6
6/22/2024 3:00	1.0	1.0	181	0.2	0.5	67	0.2	0.4	322
6/22/2024 3:30	0.6	1.0	153	0.6	0.3	55	0.2	0.3	14
6/22/2024 4:00	2.3	0.7	75	0.2	0.2	50	0.2	0.6	71
6/22/2024 4:30	5.4	0.8	100	0.2	0.3	357	0.2	0.6	37
6/22/2024 5:00	2.8	0.8	158	0.2	0.3	18	0.2	0.2	317
6/22/2024 5:30	1.4	0.9	150	0.2	0.2	346	0.2	0.2	228
6/22/2024 6:00	1.8	0.8	136	0.2	0.3	332	0.2	0.3	4
6/22/2024 6:30	1.5	0.6	135	0.2	0.3	339	0.2	0.8	3
6/22/2024 7:00	6.5	0.7	33	0.2	0.2	317	0.2	0.5	40
6/22/2024 7:30	1.4	1.2	117	0.2	0.6	224	0.2	1.1	62
6/22/2024 8:00	0.5	1.8	148	0.2	1.1	170	0.2	2.0	179
6/22/2024 8:30	0.4	3.2	178	0.2	1.7	184	0.2	1.7	191
6/22/2024 9:00	0.6	7.0	165	0.2	2.2	225	0.2	2.0	188
6/22/2024 9:30	0.8	24.2	139	0.7	2.7	239	3.3	1.8	219
6/22/2024 10:00	0.7	3.1	195	0.2	2.1	232	0.8	2.2	184
6/22/2024 10:30	0.5	4.5	216	1.4	2.8	254	0.6	1.8	199
6/22/2024 11:00	0.2	4.2	184	0.5	2.3	239	0.7	2.0	193
6/22/2024 11:30	0.2	5.4	216	0.2	1.7	167	0.2	1.7	211
6/22/2024 12:00	0.2	4.8	190	0.2	2.0	202	0.2	1.8	148
6/22/2024 12:30	0.2	5.9	178	0.2	2.2	154	0.2	2.6	169
6/22/2024 13:00	0.2	4.0	184	0.2	2.2	161	0.2	2.3	152
6/22/2024 13:30	0.2	5.5	201	0.2	1.7	101	0.2	1.4	74
6/22/2024 14:00	0.4	6.2	186	0.2	1.9	166	0.2	1.9	145
6/22/2024 14:30	0.6	4.2	174	0.2	2.2	163	0.2	2.1	166
6/22/2024 15:00	0.5	5.1	201	0.6	3.3	204	0.2	3.2	201
6/22/2024 15:30	0.4	3.7	199	1.6	3.6	237	0.8	2.3	233
6/22/2024 16:00	0.4	4.5	225	0.2	2.4	215	0.2	2.2	209
6/22/2024 16:30	0.5	4.7	202	0.7	2.8	204	0.8	2.3	206
6/22/2024 17:00	0.4	4.2	186	0.2	2.6	201	0.8	2.0	213
6/22/2024 17:30	0.5	4.1	205	0.2	2.0	199	0.2	2.0	202
6/22/2024 18:00	0.4	4.0	202	0.2	1.6	202	1.6	1.7	195
6/22/2024 18:30	0.6	2.8	202	0.2	1.3	204	2.9	0.9	221
6/22/2024 19:00	1.0	2.2	182	0.2	0.5	112	4.3	0.3	247
6/22/2024 19:30	0.8	2.3	180	0.2	0.4	65	4.8	0.3	256
6/22/2024 20:00	0.7	2.2	186	0.2	0.3	69	3.4	0.2	326
6/22/2024 20:30	0.7	3.7	189	0.2	0.8	89	2.8	0.6	189
6/22/2024 21:00	0.4	4.5	172	0.2	1.2	201	0.5	1.2	198
6/22/2024 21:30	0.2	4.4	178	0.2	2.3	201	0.2	1.8	190
6/22/2024 22:00	0.2	3.4	171	0.2	1.9	193	0.2	1.9	182
6/22/2024 22:30	0.5	2.8	179	0.2	1.3	214	0.2	1.2	190
6/22/2024 23:00	0.2	2.7	173	0.2	1.8	199	0.2	1.3	188
6/22/2024 23:30	0.2	3.3	172	0.2	1.5	196	0.2	1.0	188
6/23/2024 0:00	0.6	3.2	173	0.2	1.6	194	0.2	1.1	190



AQS Null Data Codes	
Qualifier Code	Item Description
AB	TECHNICIAN UNAVAILABLE
AC	CONSTRUCTION/REPAIRS IN AREA
AD	SHELTER STORM DAMAGE
AE	SHELTER TEMPERATURE OUTSIDE LIMITS
AI	INSUFFICIENT DATA (CAN'T CALCULATE)
AM	MISCELLANEOUS VOID
AN	MACHINE MALFUNCTION
AO	BAD WEATHER
AP	VANDALISM
AS	POOR QUALITY ASSURANCE RESULTS
AT	CALIBRATION
AU	MONITORING WAIVED
AV	POWER FAILURE (POWR)
AW	WILDLIFE DAMAGE
AX	PRECISION CHECK (PREC)
AY	Q C CONTROL POINTS (ZERO/SPAN)
AZ	Q C AUDIT (AUDT)
BA	MAINTENANCE/ROUTINE REPAIRS
BB	UNABLE TO REACH SITE
BC	MULTI-POINT CALIBRATION
BD	AUTO CALIBRATION
BE	BUILDING/SITE REPAIR
BF	PRECISION/ZERO/SPAN
BJ	OPERATOR ERROR
BK	SITE COMPUTER/DATA LOGGER DOWN
EC	EXCEED CRITICAL CRITERIA