



Legend

-  Offsite Fixed Monitoring Locations
-  Onsite Fixed Monitoring Locations
-  New-Indy Catawba

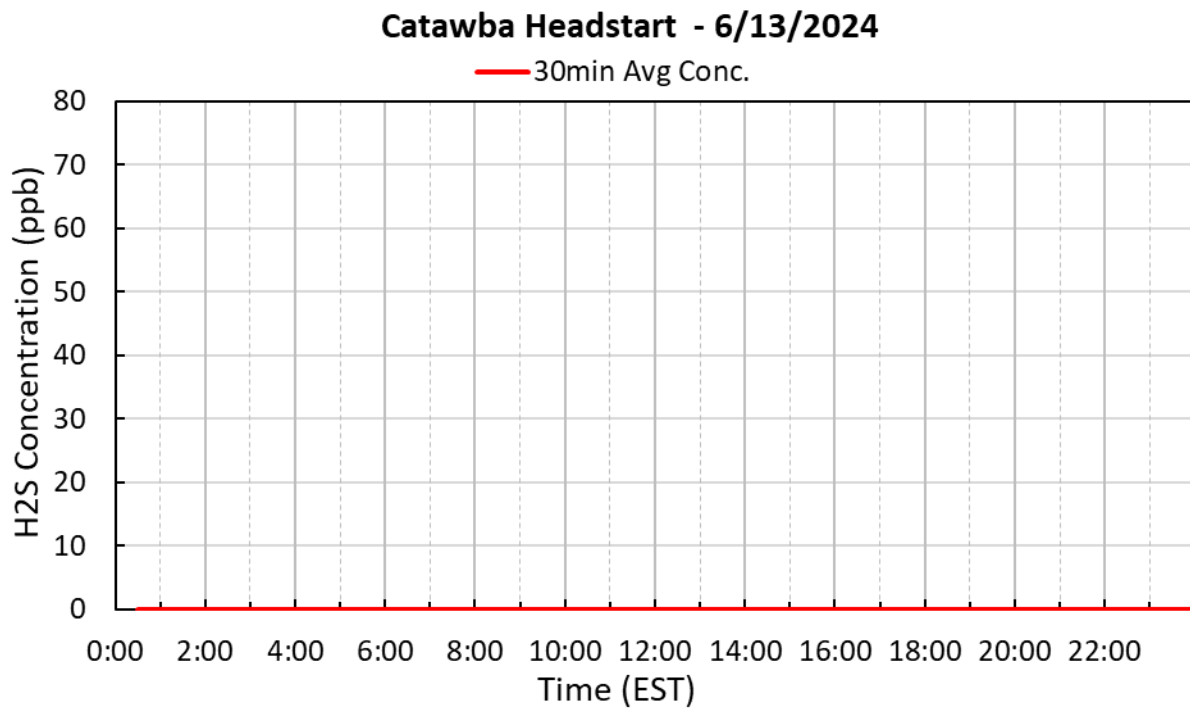
Period H₂S Monitoring Hydrogen Sulfide Offsite Monitors

Below are graphs for offsite locations where hydrogen sulfide (H₂S) was detected during the current reporting period.

The five stand-alone H₂S monitoring stations correlate with five previous EPA's Viper monitoring system which includes areas to the north-northeast and south-southwest of the New-Indy Catawba Mill.

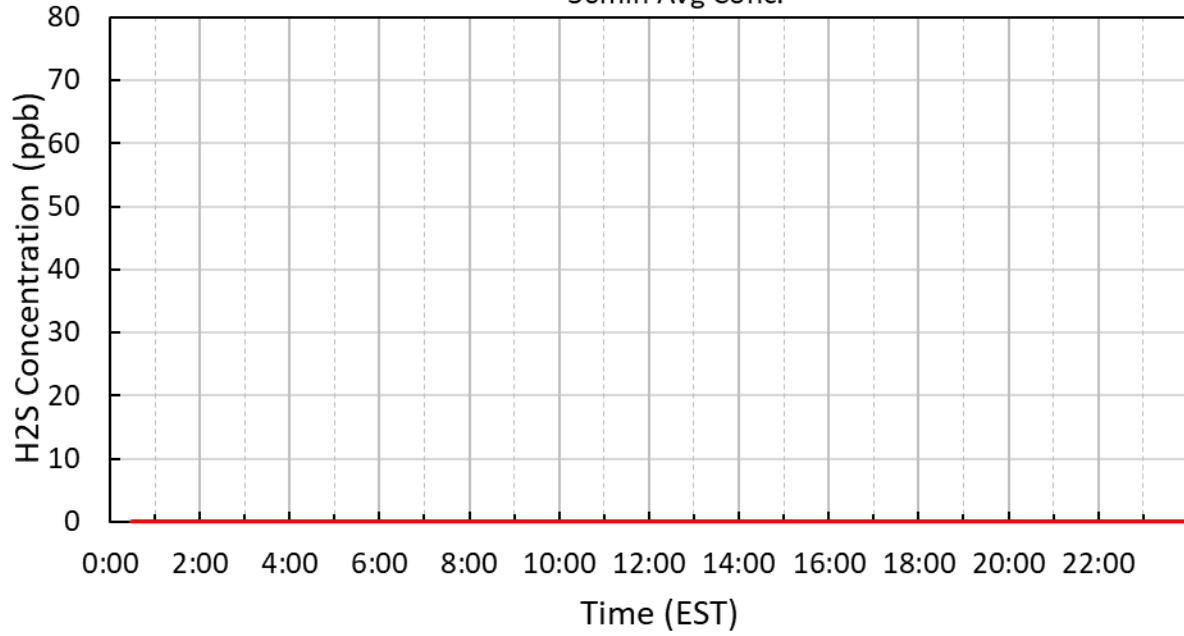
Winds were coming from a variable direction throughout the day 1 to 6 mph.

See wind rose diagram with aerial map figure for full wind data during this reporting period.



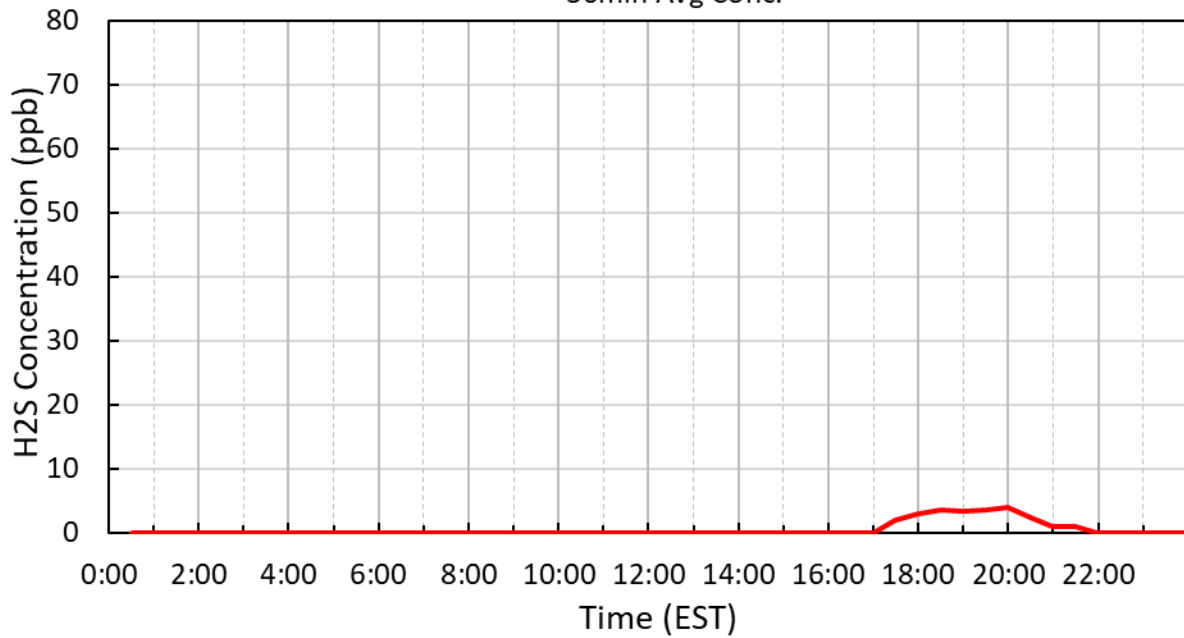
Treetops - 6/13/2024

— 30min Avg Conc.

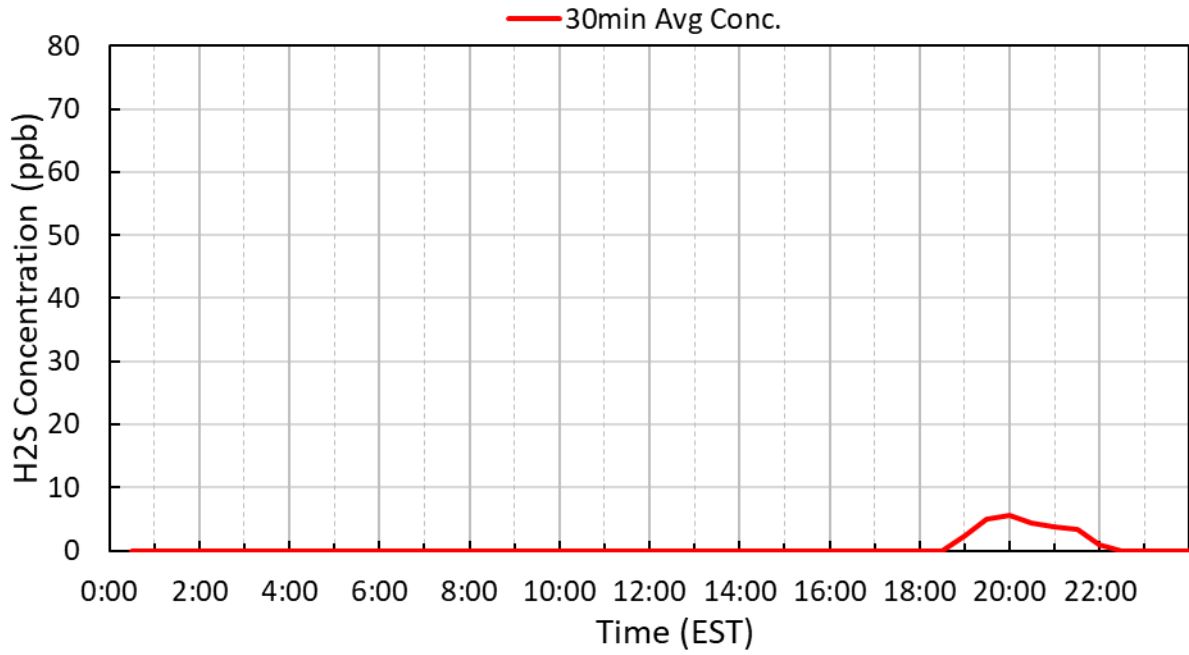


Liberty Hill - 6/13/2024

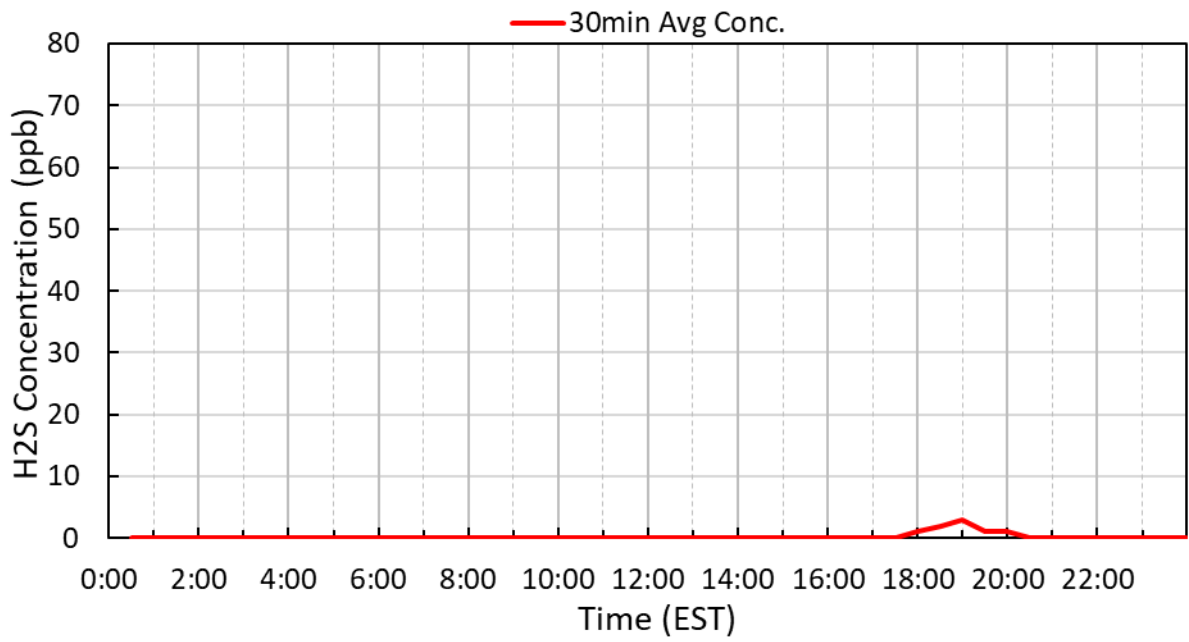
— 30min Avg Conc.



Riverchase - 6/13/2024



Millstone Creek - 6/13/2024



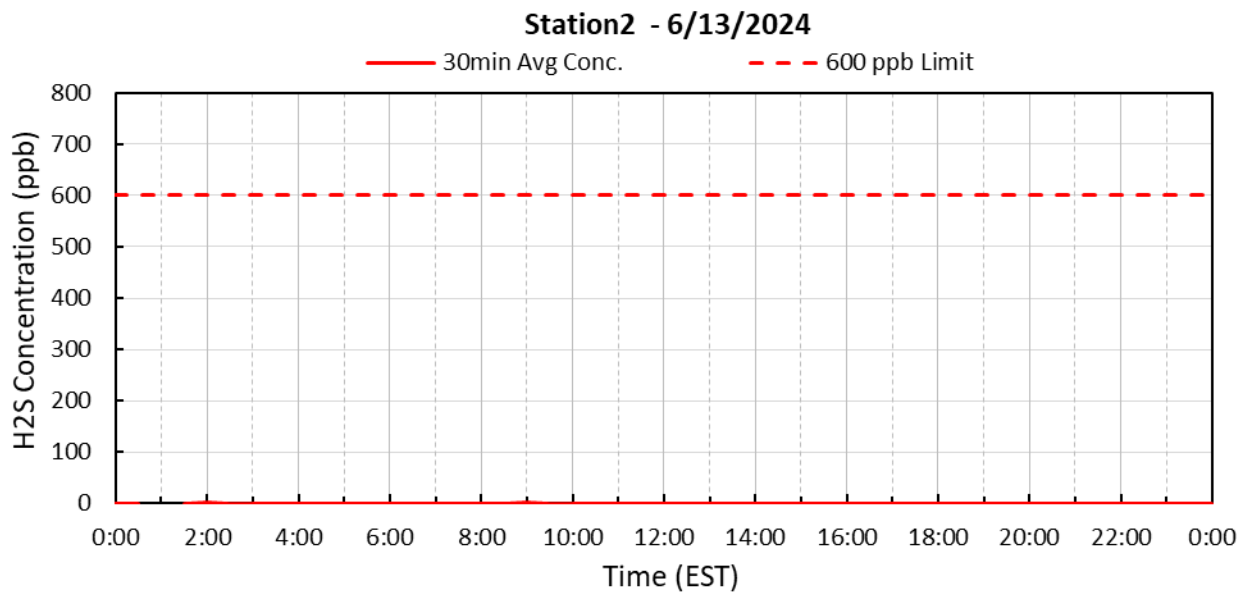
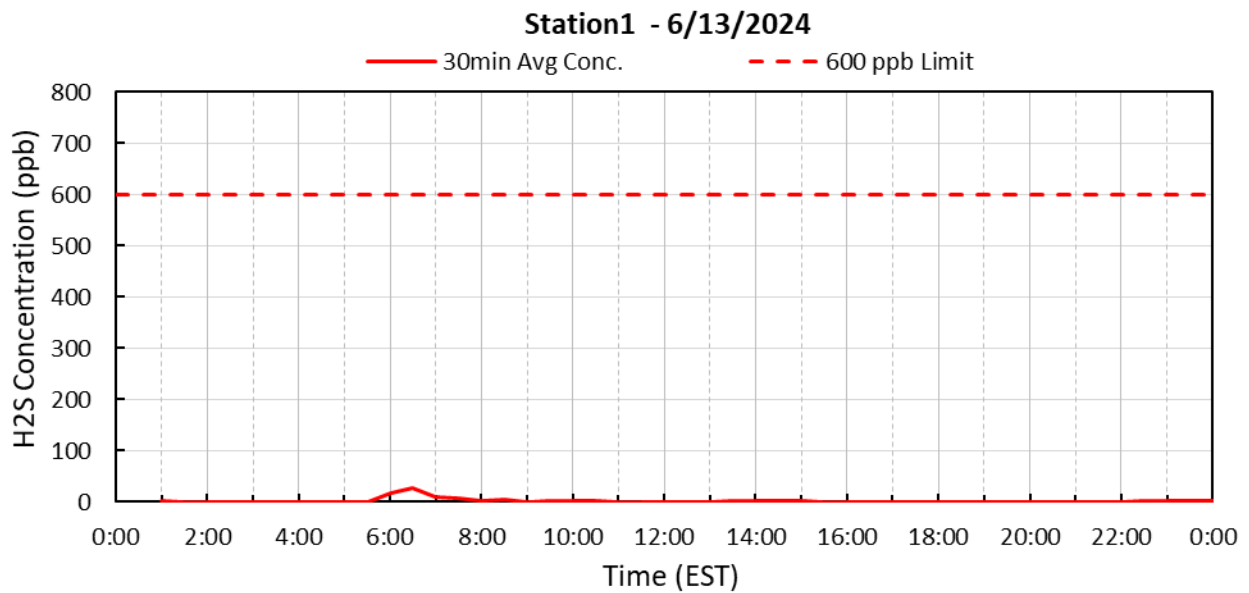
Period H₂S Monitoring Hydrogen Sulfide Onsite Monitors

Below are graphs for onsite locations during the current reporting period.

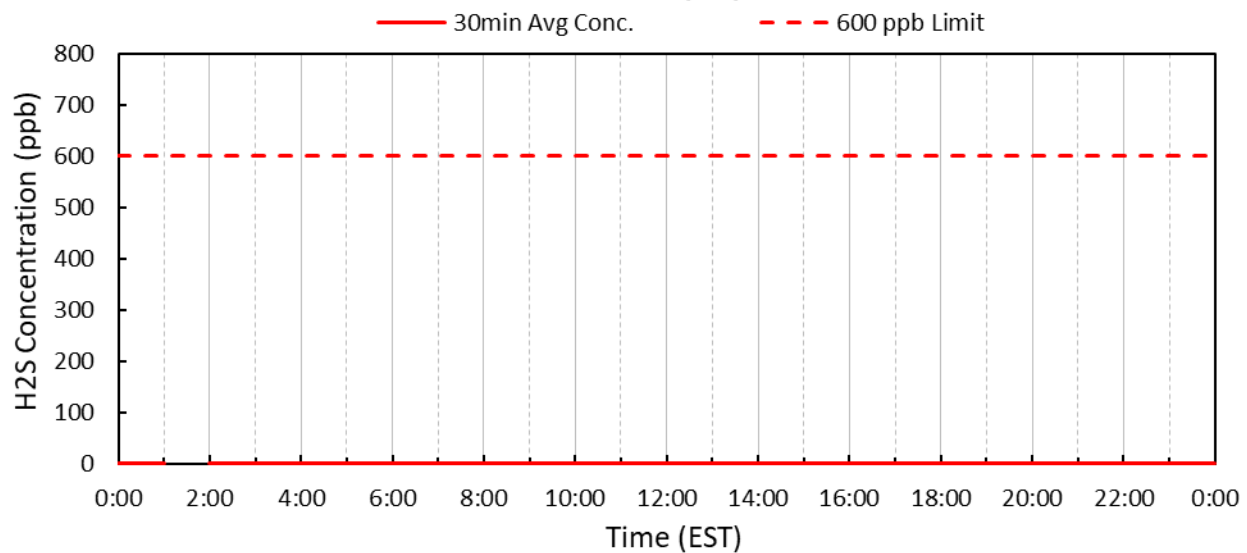
Depending on wind direction, the H₂S measured at the onsite fence line locations may not exit the mill property at reported concentrations. Wind directions from offsite locations, blowing onto mill property, will disperse ambient concentrations to lower levels prior to exiting the plant site.

Winds were coming from a variable direction throughout the day 1 to 6 mph.

See wind rose diagram with aerial map figure for full wind data during this reporting period.



Station3 - 6/13/2024



Submitted Fenceline H₂S and Met 30-minute Data

30-Minute Avgs	Station 1			Station 2			Station 3		
	H2S	Met		H2S	Met		H2S	Met	
	30min Avg H2S Conc.	30min Avg WS	30min Avg WD	30min Avg H2S Conc.	30min Avg WS	30min Avg WD	30min Avg H2S Conc.	30min Avg WS	30min Avg WD
Date / Time	ppb	mph	degrees	ppb	mph	degrees	ppb	mph	degrees
6/13/2024 0:30	AX	1.1	201	0.2	0.4	334	0.2	0.3	274
6/13/2024 1:00	1.0	1.2	181	AX	0.2	84	0.2	0.2	229
6/13/2024 1:30	0.7	1.4	174	0.2	0.3	11	AX	0.2	262
6/13/2024 2:00	0.5	1.0	179	0.4	0.3	39	0.2	0.3	96
6/13/2024 2:30	0.5	1.1	173	0.2	0.2	20	0.2	0.2	77
6/13/2024 3:00	0.5	1.1	157	0.2	0.3	69	0.2	0.3	28
6/13/2024 3:30	0.6	1.1	154	0.2	0.2	56	0.2	0.2	85
6/13/2024 4:00	0.4	1.1	164	0.2	0.2	59	0.2	0.2	87
6/13/2024 4:30	0.6	1.2	154	0.2	0.2	47	0.2	0.2	357
6/13/2024 5:00	0.6	1.0	153	0.2	0.2	46	0.2	0.2	300
6/13/2024 5:30	0.7	2.1	72	0.2	0.3	33	0.2	0.3	25
6/13/2024 6:00	16.7	3.2	55	0.2	0.4	15	0.2	0.4	6
6/13/2024 6:30	26.8	3.0	48	0.2	0.5	22	0.2	0.5	32
6/13/2024 7:00	10.5	3.4	51	0.2	0.6	354	0.2	1.0	19
6/13/2024 7:30	6.5	1.9	19	0.2	0.7	326	0.2	1.0	36
6/13/2024 8:00	1.5	1.9	33	0.2	1.3	346	0.2	1.1	30
6/13/2024 8:30	3.5	1.8	147	0.2	1.3	179	0.2	1.0	74
6/13/2024 9:00	0.2	1.9	59	0.5	1.3	165	0.2	1.8	64
6/13/2024 9:30	0.9	2.8	63	0.2	1.2	82	0.2	1.7	71
6/13/2024 10:00	1.0	2.3	42	0.2	1.5	46	0.2	1.6	45
6/13/2024 10:30	0.9	3.3	78	0.2	1.2	141	0.2	2.4	67
6/13/2024 11:00	0.7	3.4	126	0.2	1.1	68	0.2	2.5	61
6/13/2024 11:30	0.2	3.4	120	0.2	1.3	73	0.2	2.6	65
6/13/2024 12:00	0.4	4.2	92	0.2	1.5	47	0.2	3.0	67
6/13/2024 12:30	0.2	3.7	59	0.2	1.7	87	0.2	2.8	62
6/13/2024 13:00	0.7	4.2	74	0.2	1.7	72	0.2	3.1	78
6/13/2024 13:30	0.9	4.6	98	0.2	1.6	71	0.2	2.4	0
6/13/2024 14:00	0.9	5.7	61	0.2	1.0	64	0.2	1.7	76
6/13/2024 14:30	0.9	3.8	74	0.2	1.7	121	0.2	2.5	79
6/13/2024 15:00	1.5	4.9	76	0.2	0.9	65	0.2	1.9	43
6/13/2024 15:30	0.2	4.2	97	0.2	1.7	149	0.2	3.0	81
6/13/2024 16:00	0.2	5.4	120	0.2	1.4	79	0.2	1.8	83
6/13/2024 16:30	0.2	3.9	97	0.2	1.2	86	0.2	2.4	68
6/13/2024 17:00	0.2	2.8	110	0.2	1.2	90	0.2	1.8	120
6/13/2024 17:30	0.4	2.2	161	0.2	1.1	107	0.2	2.1	80
6/13/2024 18:00	0.2	2.8	117	0.2	0.8	82	0.2	2.2	83
6/13/2024 18:30	0.2	4.7	143	0.2	0.8	86	0.2	1.3	150
6/13/2024 19:00	0.2	3.4	142	0.2	0.4	27	0.2	0.9	103
6/13/2024 19:30	0.2	1.7	176	0.2	0.4	73	0.2	0.3	316
6/13/2024 20:00	0.2	1.9	170	0.2	0.5	85	0.2	0.3	346
6/13/2024 20:30	0.4	2.2	192	0.2	0.3	49	0.2	0.3	317
6/13/2024 21:00	0.6	1.7	172	0.2	0.4	61	0.2	0.3	305
6/13/2024 21:30	0.5	1.2	162	0.2	0.3	47	0.2	0.4	349
6/13/2024 22:00	0.5	1.4	178	0.2	0.2	43	0.2	0.3	135
6/13/2024 22:30	1.1	1.4	167	0.2	0.3	25	0.2	0.3	267
6/13/2024 23:00	1.8	1.4	183	0.2	0.4	11	0.2	0.2	284
6/13/2024 23:30	1.0	1.3	164	0.2	0.3	58	0.2	0.5	21
6/14/2024 0:00	1.1	1.0	195	0.2	0.2	42	0.2	0.3	290

AQS Null Data Codes	
Qualifier Code	Item Description
AB	TECHNICIAN UNAVAILABLE
AC	CONSTRUCTION/REPAIRS IN AREA
AD	SHELTER STORM DAMAGE
AE	SHELTER TEMPERATURE OUTSIDE LIMITS
AI	INSUFFICIENT DATA (CAN'T CALCULATE)
AM	MISCELLANEOUS VOID
AN	MACHINE MALFUNCTION
AO	BAD WEATHER
AP	VANDALISM
AS	POOR QUALITY ASSURANCE RESULTS
AT	CALIBRATION
AU	MONITORING WAIVED
AV	POWER FAILURE (POWR)
AW	WILDLIFE DAMAGE
AX	PRECISION CHECK (PREC)
AY	Q C CONTROL POINTS (ZERO/SPAN)
AZ	Q C AUDIT (AUDT)
BA	MAINTENANCE/ROUTINE REPAIRS
BB	UNABLE TO REACH SITE
BC	MULTI-POINT CALIBRATION
BD	AUTO CALIBRATION
BE	BUILDING/SITE REPAIR
BF	PRECISION/ZERO/SPAN
BJ	OPERATOR ERROR
BK	SITE COMPUTER/DATA LOGGER DOWN
EC	EXCEED CRITICAL CRITERIA